

## 1/2" Air Ratchet Wrench 102554

### Specification:

Free Speed	160 r/min
Capacity Bolt Size	1/2" (M13)
Max. Torque	60 ft-lb (80 N-m)
Air Consumption	13 CFM (368 L/min)
Overall Length	10-2/5" (265 mm)
Air Inlet (PT)	1/4" (6.35 mm)
Air Hose (I.D.)	3/8" (10 mm)
Air Pressure	90 psi (6.3 bar)
Net Weight	2.9 lbs (1.32 kg)

### Noise and Vibration:

Vibration EN ISO 28927-2	Noise EN ISO 15744	Remark
Load: 3.8 m/s <sup>2</sup>	Sound Pressure Level load: 98.7 dB(A)	Please always wear ear protector at environment noise level > 80 dB(A) due to risk of impaired hearing!
	Sound power level load: 109.7 dB(A)	
Uncertainty K= 1.5 m/s <sup>2</sup>	Uncertainty K= 3dB	

# DECLARATION OF CONFORMITY

IRONSIDE INTERNATIONAL declares that this new product complies with the following regulations:

ART 102554 ST-RW5004

Designation:

1/2" AIR RATCHET WRENCH



Machinery Directive: 2006/42/EU

And conforms to the following EN Standard

EN ISO 12100: 2010  
EN ISO 11148-6:2012

Name and signature

A handwritten signature in black ink, appearing to read 'Stéphane DERRIEN', written over a faint, larger version of the same signature.

Stéphane DERRIEN

Date and place  
14/04/2020

## Foreword

IRONSIDE is a manufacturer and exporter of air tools since established. We have devote all our efforts in improving quality and tools' life. As well as the noise and vibration of tools. Bring all of you working efficiencies, profits, and enjoy using the tool is our principle.

## Features

This tool with a reversible spindle driving a hammer which periodically strikes an anvil which includes a drive adapter for the purpose of tightening or loosening nuts and bolts without producing any major torque reaction on the power tool.

## Operator's instruction

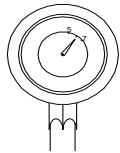
### 1. Main Applications

The ideal tool for the mechanic who can't afford downtime. Its dramatically longer life, combined with a powerful motor and comfortable ergonomic design, make it the best choice for work on exhaust systems, small engines, water pumps, fuel pumps, and radiator and air conditioner removal and replacement.

### 2. Cautions for Use

#### 2-1 Air pressure

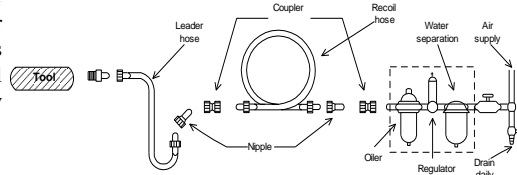
Maximum performance is displayed at the proper sanding speed, obtainable at a gauge pressure of 6.2 bar. Range-wise, this is an air pressure from 5 to 7 bar (70 to 100 psi)



#### 2-2 Air line

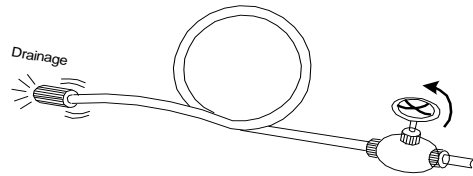
Use a 3/4 " air hose between the compressor and the tool . Compressed air is cooled and its water content separated, as soon as the air leaves the compressor. A portion of the water content, however, is condensed in the piping, and can enter the tool mechanism, and may cause trouble. So, install an air filter and an oiler between the

compressor and the tool. Use a 3 HP or larger compressor for each sander.



#### 2-3 Air hose

Clean the hose with a blast of compressed air before connecting the hose to air tool. This will prevent both moisture and dust within the hose from entering the tool and causing possible rust or malfunction. To compensate for unusually long hose (over 25 ft), the line pressure should be increased accordingly.



#### 2-4 Inserted tools

Use only the socket or adapter which are in good condition for use. The intended socket and adapter for this air tool could be stated as " Square Drive" on the specification list.

2-5 The approved eye protector, ear-muff, mouth-muffle, and gloves shall be worn when operate this tool.

2-6 The working place shall be ventilative.

2-7 Release the on-off device in the case of energy supply failure.

## 3. Operation Method

#### 3.1 On-off device

The on-off device is on the inner or outer contour of the grip. It is a hold-to-run" type. This tool stops rotation within few sec., after releasing the lever. For the sake of safety, place it on a level

plate or on hanger after it completely stops.

#### 3.2 Rotating Direction

One shall make sure the direction of rotation before actuate this tool. The " F " indicts foreword and the " R " indicts reverse. Forward is defined as clockwise direction seen from the operator 's position.

## 4. Maintenance

#### 4-1 Lubrication

Before connecting the hose , apply 4 or 5 drops of #10 spindle oil at the air inlet. Use of a thicker oil can lead to reduced performance or malfunction. If a thicker oil is used by accident, wash it away immediately. Also, every 3 or 4 hours of operation, oiling is necessary.

#### 4-2 Storage

Avoid storing the tool in a location subject to high humidity. If the tool is left as it is used , the residual moisture inside the tool can cause rust. Before storing and after operation, oil the tool at the air inlet with spindle oil and run it for a short time.

#### 4-3 Disposal

If the tool is too seriously damaged to be used anymore, drop it in a resource recycling can. Never drop it into fire.

#### 4-4 Ordering service Parts

For further operational and handling information or for replacement of parts and components, contact the sale agent from whom you purchased the tool or the service division of our company.

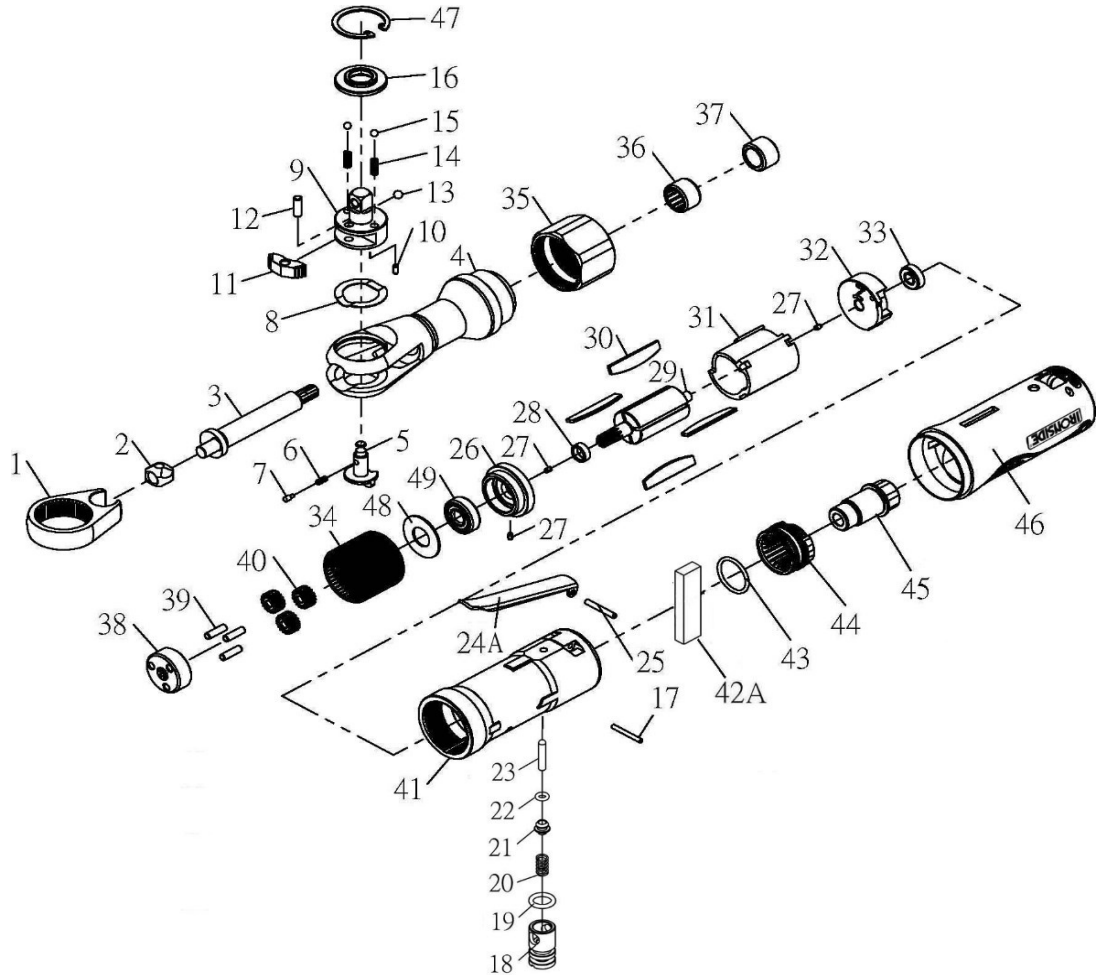
\* In ordering parts and components, give each part number, name and quantity.

## Warning

1. The power toll shall not be used in potentially explosive atmospheres.
2. Disconnect the air hose before changing or adjusting any inserted tools.
3. Prevent long hair or loose clothing from drawing in while operate this tool.
4. Keep your body in well balanced position and always wear gloves to reduce the risk of crushing caused by torque between handle and workpiece.
5. Unexpected direction of rotating could cause a hazardous situation.
6. Slip/Trip/Fall is a major reason of serious injury or death. Beware of excess hose left on the walking or work surface.
7. Wearing eye/face protector could reduce the danger to person from high speed splinters being emitted from this tool in the case of inserted tool failure or emitted from the workpiece.
8. Wearing mouth-muff could avoid inhaling dust or handling debris from work process that can be harmful to your health.
9. Excessive high air pressure and too much free rotation may speed the wear of this tool and might cause danger situation.



3/8"(1/2")RATCHET WRENCH



### PARTS LIST

No.	Parts No.	Description	Q'ty
1	RW5003-01	Ratchet Yoke	1
2	RW5003-02	Drive Bushing	1
3	RW5003-03	Crank Shaft	1
4	<b>102555</b>	Ratchet Housing	1
5	RW5004-05	Reverse Button [102554]	1
6	RW5003-06	Ratchet Spring	1
7	RW5003-07	Spring Cap	1
8	RW5003-08	Washer	1
9	RW5004-09	1/2" Ratchet Anvil [102554]	1
10	RW5003-10	Spring Pin (Φ2.5x6)	1
11	RW5003-11	Pawl	1
12	RW5003-12	Needle Roller	1
13	RW5004-13	Steel Ball [102554]	1
14	<b>102555</b>	Friction Spring	2
15	<b>102555</b>	Steel Ball (5/32")	2
16	RW5004-16	Trust Washer [102554]	1
17	DG1002L-17	Spring Pin (Φ2.5x20)	1
18	DG1002L-18	Valve Screw	1
19	DG1002L-19	O-Ring (ID9.8x2.4)	1
20	DG1002L-20	Valve Spring	1
21	DG1002L-21	Throttle Valve	1
22	DG1002L-22	O-Ring (P4)	1
23	DG1002L-23	Valve Shaft	1
24A	DG1002L-24A	Throttle Lever Assy	1
25	DG1002L-25	Spring Pin (M3x18)	1

No.	Parts No.	Description	Q'ty
26	RW5003-26	Front End Plate	1
27	RW5003-27	Spring Pin (Φ2.5x4)	3
28	RW5003-28	Spacer	1
29	RW5003-29	Rotor	1
30	<b>102555</b>	Rotor Blade	4
31	RW5003-31	Cylinder	1
32	RW5003-32	Rear End Plate	1
33	RW5003-33	Ball Bearing (696ZZ)	1
34	RW5003-34	Internal Gear	1
35	RW5003-35	Clamp Nut	1
36	RW5003-36	Needle Bearing (HK1212)	1
37	RW5003-37	Bushing	1
38	RW5003-38	Planet Gage	1
39	<b>102555</b>	Needle Roller (Φ4x13.8)	3
40	<b>102555</b>	Idler Gear	3
41	DG1002L-41	Housing	1
42A		Muffler	1
43	<b>102555</b>	O-Ring (S022.4)	1
44	DG1002L-44	Exhaust Sleeve	1
45	DG1002L-45	Inlet Bushing	1
46	DG1002L-46	Housing Cover	1
47	RW5003-47	Internal Stop Ring (R29)	1
48	RW5003-48	Washer	1
49	RW5003-49	Bearing (608ZZ)	1