



SR-B 400

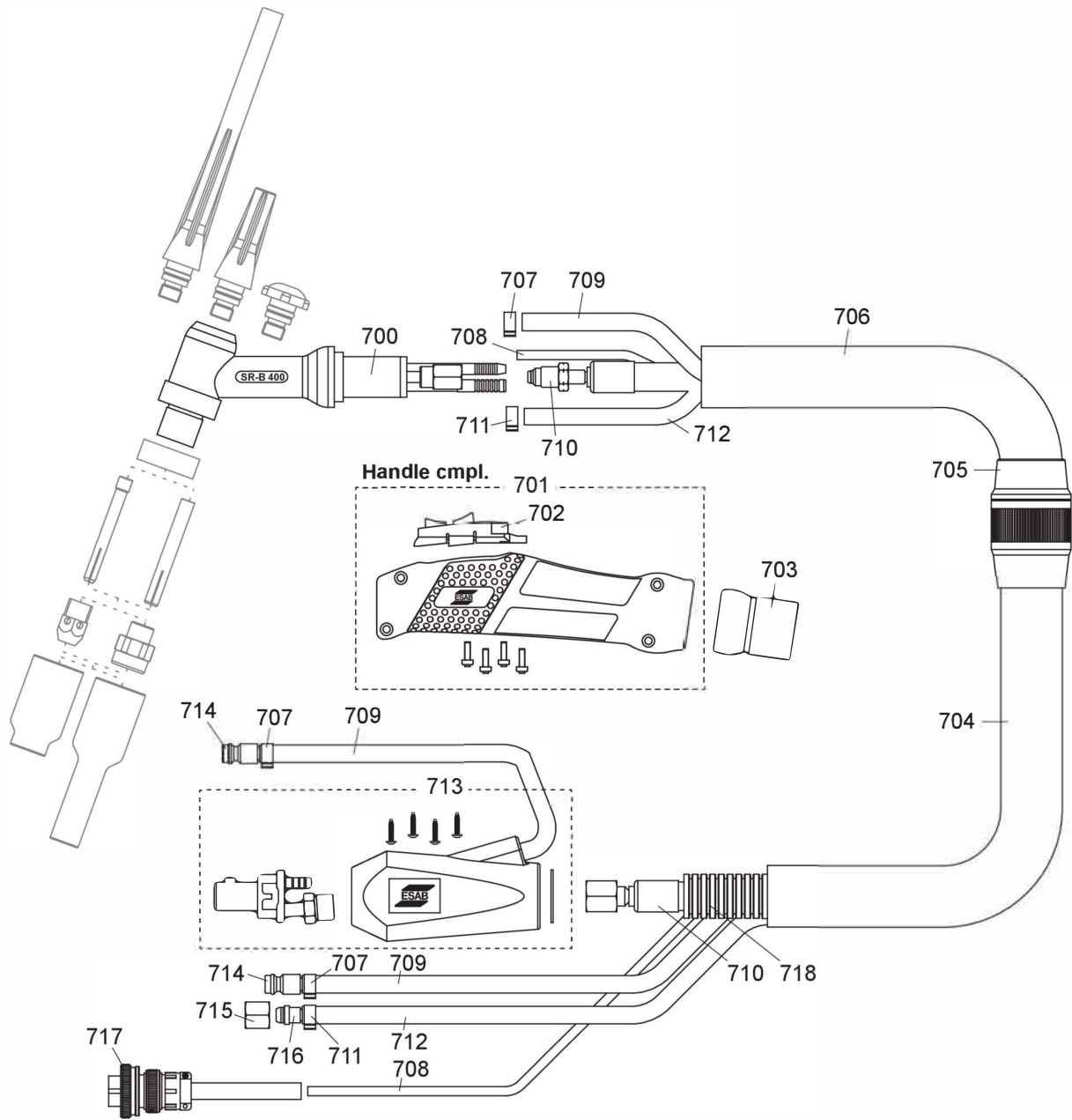


FX = flexible body, V = valve, HD = heavy duty, W = water cooled

Ordering no.	Type	Torch head			TSB 1025		TSB 3550				W
		Switch	Valve	F head	4 m	8 m	4 m	8 m	12 m	16 m	
					13 ft	26 ft	13 ft	26 ft	39 ft	52 ft	
0700025538	SR-B 400	X					X				X
0700025539	SR-B 400	X						X			X

SR-B 400

Item	Qty.	Ordering no.	Denomination	Notes
SR-B 400				
700	1	0700 025 615	Torch head rigid	
701	1	0700 025 621	Handle large	
702	1	0700 025 622	Precision switch dual	
	1	0700 025 605	Dual lever switch	
703	1	0700 025 639	Knuckle joint	
704	1	0700 025 998	Rubber hose	25x1.5 mm, per m
705	1	0700 025 641	Hose coupling complete, large	
706	1	0700 025 999	Leather hose	0.6 m
707	3	0700 025 975	Hose clamp with ring	9.0 mm
708	1	0700 025 979	Control cable	per m
709	1	0700 025 994	Water hose	per m
710	1	314P16GI40	Power cable	4.0 m
710	1	314P16GI80	Power cable	8.0 m
711	2	0700 025 974	Hose clamp with ring	8.7 mm
712	1	0700 025 993	Gas hose	per m
713	1	0700 025 630	TIG connector 3550	
714	2	0365 803 010	Water quick coupling	
715	1	0700 025 634	Nut G1/8"	
716	1	0700 025 633	Nipple for G1/8"	
717	1	0700 300 584	2 pin plug	
	1	0700 300 585	5 pin plug	M12
718		0700 025 978	Flexible corrugated tube	300 mm

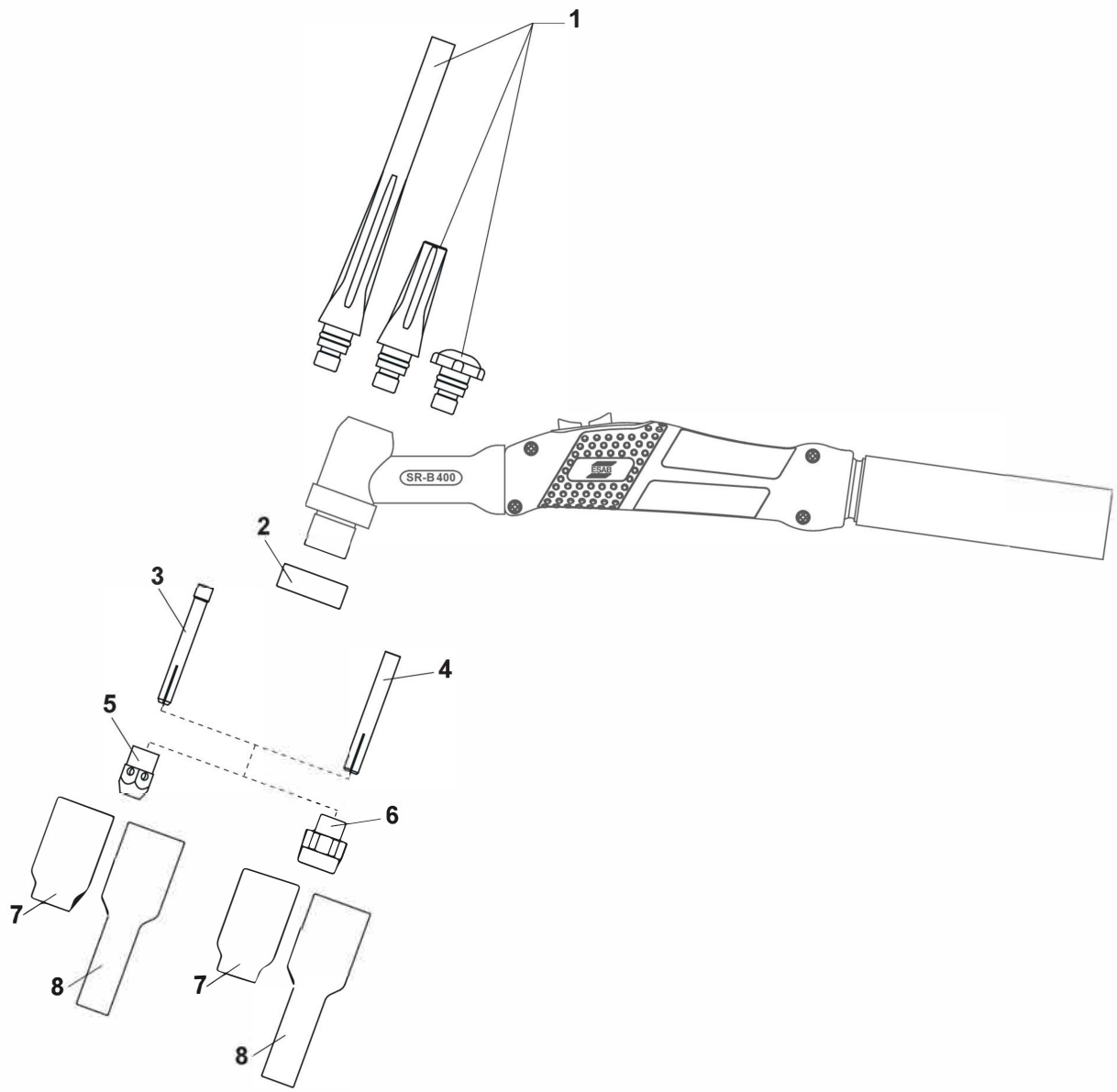


SR-B 400

Nozzles, collets, collet bodies and gas lenses:

Bold = standard delivery

Item	Size	Description	Ordering no.
1	Long	Back cap	0157 123 029
	Medium		0588 000 591
	Short		0157 123 028
2		Heat shield	0366 960 018
3	Ø 1.0	Collet standard and for gas lens	0157 123 010
	Ø 1.6		0157 123 011
	Ø 2.4		0157 123 012
	Ø 3.2		0157 123 013
	Ø 4.0		0157 123 014
4	Ø 2.4	Collet, heavy duty	0157 123 077
	Ø 3.2		0157 123 078
	Ø 4.0		0157 123 079
	Ø 4.8		0157 123 074
5	Ø 1.0-3.2	Collet body standard	0157 123 081
	Ø 3.2-4.8		0157 123 082
6	Ø 1.0	Collet body with gas lens	0157 123 091
	Ø 1.6		0157 123 092
	Ø 2.4		0157 123 093
	Ø 3.2		0157 123 094
	Ø 4.0		0157 123 095
	Ø 4.8		0157 123 075
7	Ø 6.4 (No. 4)	Gas nozzle standard and for gas lens L=42 mm	0157 123 057
	Ø 8.0 (No. 5)		0157 123 058
	Ø 9.8 (No. 6)		0157 123 059
	Ø 11.2 (No. 7)		0157 123 060
	Ø 12.7 (No. 8)		0157 123 061
	Ø 17.5		0588 000 439
8	Ø 6.4 (No. 4)	Gas nozzle standard and for gas lens L=76 mm	0700 025 693
	Ø 8.0 (No. 5)		0700 025 694
	Ø 9.8 (No. 6)		0700 025 695
	Ø 11.2 (No. 7)		0700 025 696
	Ø 12.7 (No. 8)		0700 025 697



Tungsten electrodes Eco

Ordering no. 150 mm	Ordering no. 175 mm	Tungsten electrodes Eco	Diameter	Colour	Code	Current
-	0151 574 009	Wolfram, pure	Ø 1.6	Green	WP	AC
0151 574 245	-	Wolfram, pure	Ø 2.0	Green	WP	AC
0151 574 210	0151 574 010	Wolfram, pure	Ø 2.4	Green	WP	AC
0151 574 211	0151 574 011	Wolfram, pure	Ø 3.2	Green	WP	AC
-	0151 574 012	Wolfram, pure	Ø 4.0	Green	WP	AC
0151 574 237	0151 574 037	Cerium 2%	Ø 1.6	Grey	WC20	AC/DC
0151 574 242	-	Cerium 2%	Ø 2.0	Grey	WC20	AC/DC
0151 574 238	0151 574 038	Cerium 2%	Ø 2.4	Grey	WC20	AC/DC
0151 574 239	0151 574 039	Cerium 2%	Ø 3.2	Grey	WC20	AC/DC
0151 574 240	0151 574 040	Cerium 2%	Ø 4.0	Grey	WC20	AC/DC
0151 574 230	0151 574 050	Lanthanum 1.5%	Ø 1.0	Gold	WL15	AC/DC
0151 574 231	0151 574 051	Lanthanum 1.5%	Ø 1.6	Gold	WL15	AC/DC
0151 574 243	0151 574 246	Lanthanum 1.5%	Ø 2.0	Gold	WL15	AC/DC
0151 574 232	0151 574 052	Lanthanum 1.5%	Ø 2.4	Gold	WL15	AC/DC
0151 574 233	0151 574 053	Lanthanum 1.5%	Ø 3.2	Gold	WL15	AC/DC
0151 574 234	0151 574 054	Lanthanum 1.5%	Ø 4.0	Gold	WL15	AC/DC
0151 574 235	0151 574 055	Lanthanum 1.5%	Ø 4.8	Gold	WL15	AC/DC