



# SR-B 26V



## OVERVIEW OF TORCHES

FX = flexible body, V = valve, HD = heavy duty, W = water cooled

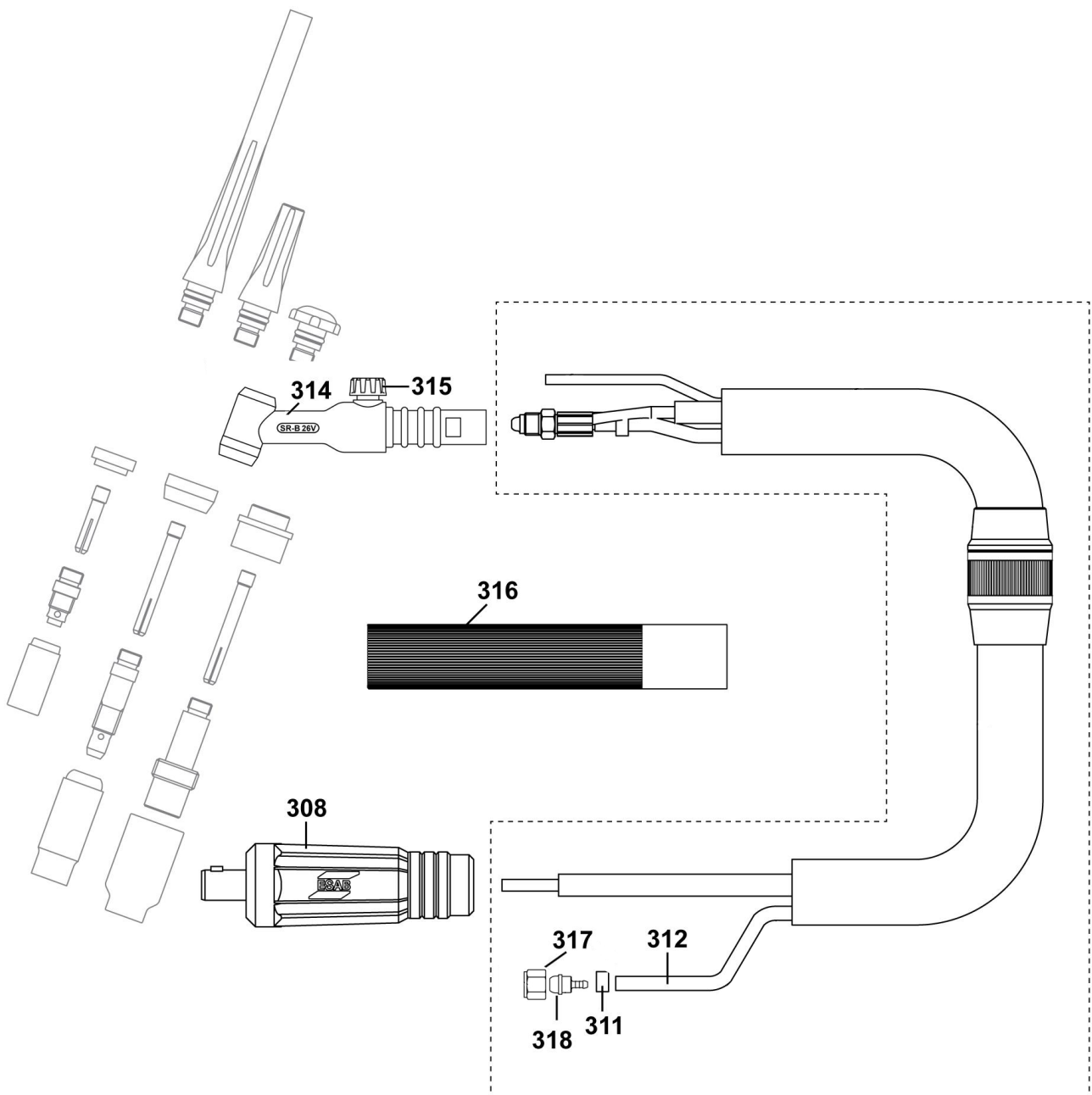
Ordering no.	Type	Torch head			TSB 1025		TSB 3550				W
		Switch	Valve	F head	4 m	8 m	4 m	8 m	12 m	16 m	
					13 ft	26 ft	13 ft	26 ft	39 ft	52 ft	
0700025522	SR-B 26V		X				X				
0700025523	SR-B 26V		X					X			

### Tungsten electrodes Eco

Ordering no. 150 mm	Ordering no. 175 mm	Tungsten electrodes Eco	Diameter	Colour	Code	Current
-	0151 574 009	Wolfram, pure	Ø 1.6	Green	WP	AC
0151 574 245	-	Wolfram, pure	Ø 2.0	Green	WP	AC
0151 574 210	0151 574 010	Wolfram, pure	Ø 2.4	Green	WP	AC
0151 574 211	0151 574 011	Wolfram, pure	Ø 3.2	Green	WP	AC
-	0151 574 012	Wolfram, pure	Ø 4.0	Green	WP	AC
0151 574 237	0151 574 037	Cerium 2%	Ø 1.6	Grey	WC20	AC/DC
0151 574 242	-	Cerium 2%	Ø 2.0	Grey	WC20	AC/DC
0151 574 238	0151 574 038	Cerium 2%	Ø 2.4	Grey	WC20	AC/DC
0151 574 239	0151 574 039	Cerium 2%	Ø 3.2	Grey	WC20	AC/DC
0151 574 240	0151 574 040	Cerium 2%	Ø 4.0	Grey	WC20	AC/DC
0151 574 230	0151 574 050	Lanthanum 1.5%	Ø 1.0	Gold	WL15	AC/DC
0151 574 231	0151 574 051	Lanthanum 1.5%	Ø 1.6	Gold	WL15	AC/DC
0151 574 243	0151 574 246	Lanthanum 1.5%	Ø 2.0	Gold	WL15	AC/DC
0151 574 232	0151 574 052	Lanthanum 1.5%	Ø 2.4	Gold	WL15	AC/DC
0151 574 233	0151 574 053	Lanthanum 1.5%	Ø 3.2	Gold	WL15	AC/DC
0151 574 234	0151 574 054	Lanthanum 1.5%	Ø 4.0	Gold	WL15	AC/DC
0151 574 235	0151 574 055	Lanthanum 1.5%	Ø 4.8	Gold	WL15	AC/DC

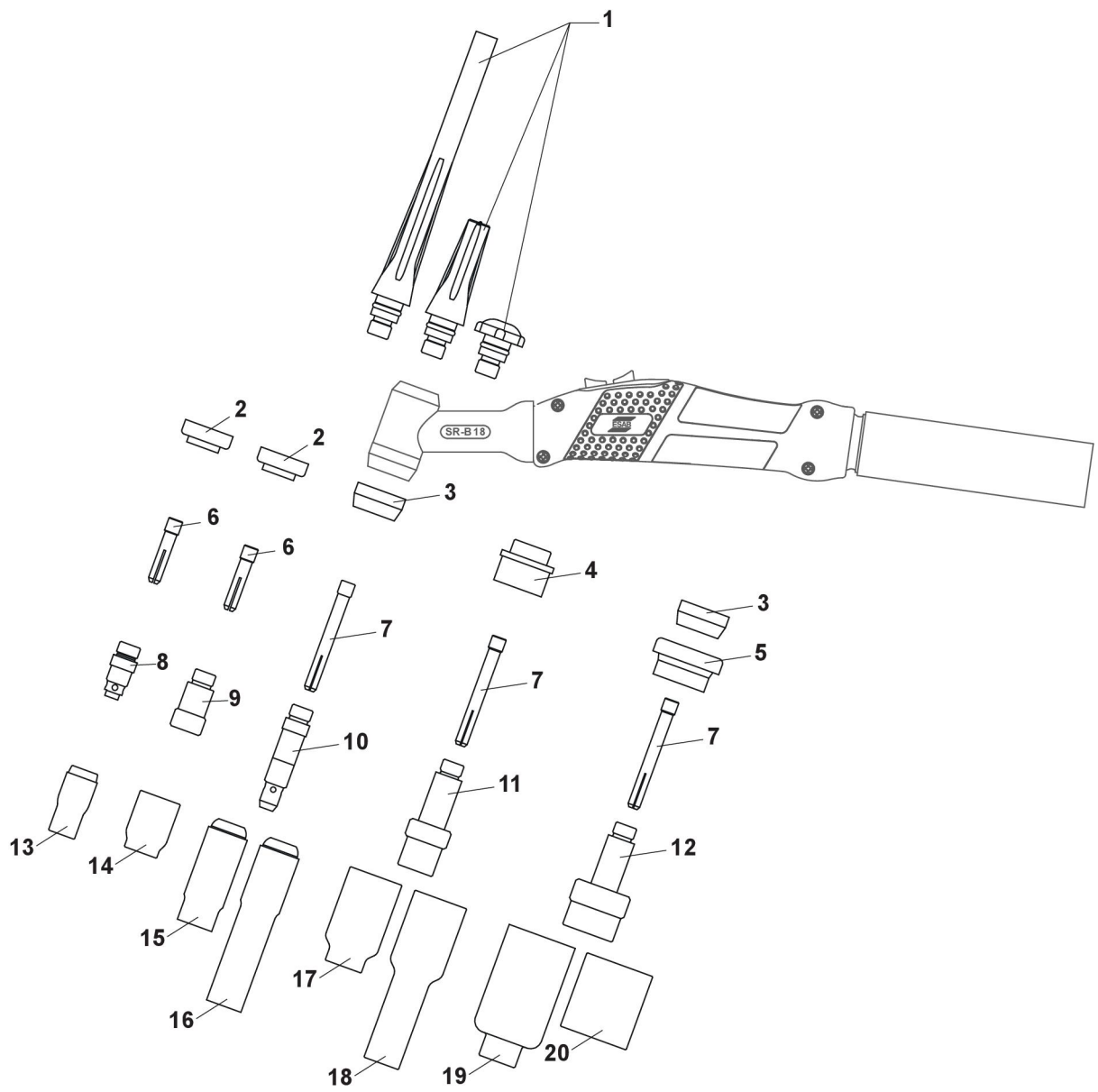
## SR-B 26V

Item	Qty.	Ordering no.	Denomination	Notes
311	1	0700 025 976	Hose clamp with ring	9.5 mm
312	1	0700 025 996	Gas hose	per m
314	1	0700 300 594	Torch head valved	
315	1	0700 300 599	Gas valve	
316	1	0700 025 632	Handle, H200	only for V-torch
317	1	0700 025 636	Nut G3/8"	SW 19, only for V-torch
318	1	0700 025 635	Nipple for G3/8"	only for V-torch



**Bold = standard delivery**

Item	Size	Description	Ordering no.
<b>1</b>	Long	Back cap	<b>0157 123 029</b>
	Medium		0588 000 591
	Short		0157 123 028
<b>2</b>		Heat shield small	0700 025 680
<b>3</b>		Heat shield	<b>0366 960 016</b>
<b>4</b>		Heat shield gas lens	0366 960 020
<b>5</b>		Heat shield large gas lens	0366 960 021
<b>6</b>	Ø 1.0	Collet standard and for gas lens, short	0349 501 216
	Ø 1.6		0349 501 217
	Ø 2.4		0349 501 218
	Ø 3.2		0349 501 219
<b>7</b>	Ø 0.5	Collet standard and for gas lens	0157 123 009
	Ø 1.0		0157 123 010
	Ø 1.6		0157 123 011
	Ø 2.0		0700 025 681
	Ø 2.4		<b>0157 123 012</b>
	Ø 3.0		0700 025 682
	Ø 3.2		0157 123 013
Ø 4.0	0157 123 014		
<b>8</b>	Ø 1.0-1.6	Collet body short	0700 025 683
	Ø 2.0-2.4		0700 025 684
	Ø 3.2		0700 025 685
<b>9</b>	Ø 1.0-1.6	Collet body with gas lens, short	0700 025 686
	Ø 2.4		0700 025 687
	Ø 3.2		0700 025 688
<b>10</b>	Ø 0.5-1.6	Collet body standard	0157 123 016
	Ø 2.0-2.4		<b>0157 123 017</b>
	Ø 3.0-3.2		0157 123 018
	Ø 4.0		0157 123 019
<b>11</b>	Ø 1.0	Collet body with gas lens, standard	0157 123 021
	Ø 1.6		0157 123 022
	Ø 2.0-2.4		0157 123 023
	Ø 3.0-3.2		0157 123 024
	Ø 4.0		0157 123 025



<b>12</b>	Ø 1.0	Collet body with extra large gas lens	0157 123 083	
	Ø 1.6		0157 123 084	
	Ø 2.0-2.4		0157 123 085	
	Ø 3.0-3.2		0157 123 086	
	Ø 4.0		0588 000 087	
<b>13</b>	Ø 6.4 (No. 4)	Gas nozzle L=30 mm	0365 310 044	
	Ø 8.0 (No. 5)		0365 310 045	
	Ø 9.8 (No. 6)		0365 310 046	
	Ø 11.2 (No. 7)		0365 310 047	
	Ø 12.7 (No. 8)		0365 310 048	
<b>14</b>	Ø 15.9 (No. 10)		0588 000 440	
	<b>14</b>	Ø 6.4 (No. 4)	Gas nozzle for gas lens, short L=25.5 mm	0157 121 032
		Ø 8.0 (No. 5)		0157 121 033
		Ø 9.8 (No. 6)		0157 121 034
		Ø 11.2 (No. 7)		0157 121 039
Ø 12.7 (No. 8)		0157 121 040		
<b>15</b>	Ø 6.4 (No. 4)	Gas nozzle standard L=47 mm	0157 123 052	
	Ø 8.0 (No. 5)		0157 123 053	
	Ø 9.8 (No. 6)		<b>0157 123 054</b>	
	Ø 11.2 (No. 7)		0157 123 055	
	Ø 12.7 (No. 8)		0157 123 056	
	Ø 15.9 (No. 10)		0588 000 442	
<b>16</b>	Ø 19 (No. 12)		0588 000 441	
	<b>16</b>	Ø 6.4 (No. 4)	Gas nozzle standard L=76 mm	0700 025 689
		Ø 8.0 (No. 5)		0700 025 690
		Ø 9.8 (No. 6)		0700 025 691
Ø 11.2 (No. 7)		0700 025 692		
<b>17</b>	Ø 6.4 (No. 4)	Gas nozzle for gas lens L=42 mm	0157 123 057	
	Ø 8.0 (No. 5)		0157 123 058	
	Ø 9.8 (No. 6)		0157 123 059	
	Ø 11.2 (No. 7)		0157 123 060	
	Ø 12.7 (No. 8)		0157 123 061	
<b>18</b>	Ø 17.5 (No. 11)		0588 000 439	
	<b>18</b>	Ø 6.4 (No. 4)	Gas nozzle for gas lens L=76 mm	0700 025 693
		Ø 8.0 (No. 5)		0700 025 694
		Ø 9.8 (No. 6)		0700 025 695
		Ø 11.2 (No. 7)		0700 025 696
Ø 12.7 (No. 8)		0700 025 697		

<b>19</b>	Ø 9.8 (No. 6)	Gas nozzle for gas lens, large L=48 mm	0157 123 088
	Ø 12.5 (No. 8)		0157 123 089
	Ø 15.9 (No. 10)		0588 000 438
	Ø 19 (No. 12)		0157 123 098
	Ø 24		0588 000 437
<b>20</b>	Ø 24	Gas nozzle for gas lens, short L=34 mm	0700 025 679

