

BEF TOWERXL1 : TOWER XL FASTENING SET FOR AERATED CEMENT

CODE	n.	content	Ø [mm]	pcs
BEFTOWERXL1	8	hexagonal head bolt	M10	1
	8	heavy anchors	M10	
	8	washer	-	



BEF PALMI: LOOP FASTENING SET FOR PALMIFIX

CODE	n.	content	Ø [mm]	L [mm]	pcs
BEFPALMI	2	countersunk head bolts	8	30	1
	2	M8 self-locking nut	-	-	



BEFSLIM: FASTENING SET FOR SLIM

CODE	n.	content	Ø [mm]	pcs
BEFSLIM1	2	washer	M10	1
	2	hexagonal nut	M10	
	1	threaded rod (L = 200 mm)	M10	
	1	self-locking nut	M10	
	1	GEKA (DEXT = 50 mm)	-	
BEFSLIM2	3	washer	M10	1
	2	hexagonal nut	M10	
	1	washer	M12	
	1	threaded rod (L = 200 mm)	M10	
	2	self-blocking nut	M10	
	1	round head bolt	M10	
1	"L" plate	-		
1	GEKA (DEXT = 50 mm)	-		



BEFSLIM1



BEFSLIM2

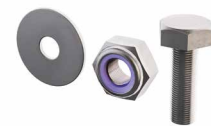
BEFTOWER: FASTENING SET FOR TOWER

CODE	n.	content	Ø [mm]	L [mm]	pcs
BEF201VGS	8	VGS screws	9	160	1
	4	washer	-	-	
BEF202VGS	8	VGS screws	9	200	1
	4	washer	-	-	



BEFPLATE: TOWER - TOWER22 FASTENING SET FOR TOPLATE 2.0

CODE	n.	content	Ø [mm]	pcs
BEFPLATE	4	self-blocking nut	M12	1
	4	hexagonal head bolts 35 mm	M12	
	4	washer	-	



BEF KITE: FASTENING SET FOR KITE

CODE	n.	content	d ₁ [mm]	L [mm]	pcs
BEFKITE	1	VGS screw	11	100	1
	2	HBS screws	8	100	

