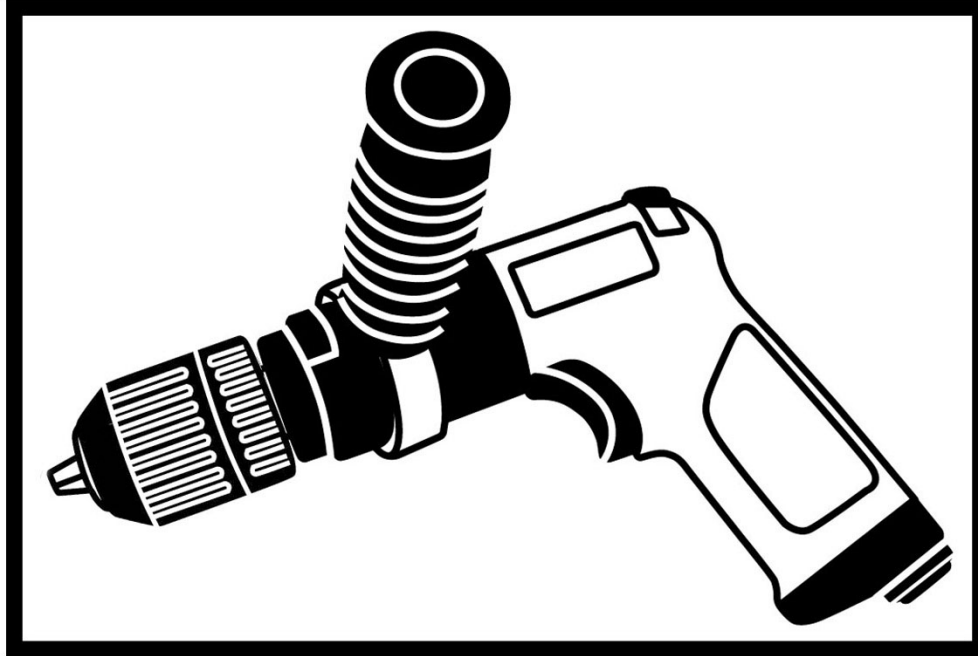


IRONSIDE®

CE



100858 ST-C112C

1/2" Air Reversible Drill With Keyless Chuck

Specification:

Free Speed	800 r/min
Drilling Cap	1/2" (13 mm)
Air Consumption	4 CFM (113 L/min)
Overall Length	9-5/8" (245 mm)
Air Inlet (PT)	1/4" (6.35 mm)
Air Hose (I.D.)	3/8" (10 mm)
Air Pressure	90 psi (6.3 bar)
Net Weight	3.05 lbs (1.4 kg)

Noise and Vibration:

Vibration EN ISO 28927-5	Noise EN ISO 15744	Remark
Load: 3.26 m/s ²	Sound Pressure Level No load: 79 dB(A)	Please always wear ear protector at environment noise level > 80 dB(A) due to risk of impaired hearing!
	Sound power level No load: 90 dB(A)	
Uncertainty K= 1.5 m/s ²	Uncertainty K= 3dB	

Ironside International
Paris Nord 2
13 rue de la Perdrix
Tremblay en France
France



EC DECLARATION OF CONFORMITY

We herewith IRONSIDE INTERNATIONAL:

Ironside International
Paris Nord 2
13 rue de la Perdrix
Tremblay en France
France

Declare that the following machine complies with the appropriate basic safety health requirement of EC directives based on its design and type as brought into the circulation by us.

In case of alteration of the machine, not agreed upon by us, this declaration will lose its validity

Machine type: **Pneumatic reversible drills 1/2"**
Model/ Serial No: **100858/ST-C112C**

Complies with these normative documents:
Machinery Directive: 2006/42/EC

and conforms to the following EN standard,

- EN ISO 12100: 2010
- EN ISO 11148-6:2012

Name and Signature

Position

T.D.

Stéphane DERRIEN



Date and Place

01/11/2017, Roissy

Foreword

IRONSIDE is a manufacturer and exporter of air tools since established. We have devote all our efforts in improving quality and tools' life. As well as the noise and vibration of tools. Bring all of you working efficiencies, profits, and enjoy using the tool is our principle.

Features

This tool is designed to meet an extremely wide range of materials which need hole drilling by means of proper drill bit.

Operator's instruction

1. Main Applications

Perfect for hole sawing, valve guide reaming and knurling, carbon removal, cylinder honing, and drilling chassis frames and trailer bodies. Ideal for jobs requiring lots of torque. Tool comes equipped with dead handle.

2. Cautions for Use

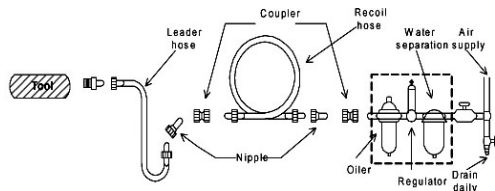
2-1 Air pressure

Maximum performance is displayed at the proper sanding speed, obtainable at a gauge pressure of 6.2 bar. Range-wise, this is an air pressure from 5 to 7 bar (70 to 100 psi)



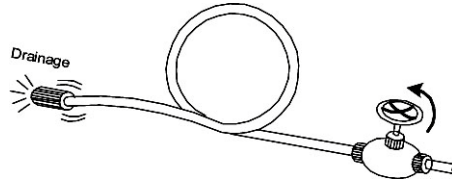
2-2 Air line

Use a 3/8" air hose between the compressor and the tool. Compressed air is cooled and its water content separated, as soon as the air leaves the compressor.



2-3 Air hose

A portion of the water content, however, is condensed in the piping, and can enter the tool mechanism, and may cause trouble. So, install an air filter and an oiler between the compressor and the tool. Use a 3 HP or larger compressor for each sander.



2-3 Air hose

Clean the hose with a blast of compressed air before connecting the hose to air tool. This will prevent both moisture and dust within the hose from entering the tool and causing possible rust or malfunction. To compensate for unusually long hose (over 25 ft), the line pressure should be increased accordingly.

2-4 The approved eye protector, ear-muff, mouth-muffle, and gloves should be worn when operate this tool.

2-5 The working place shall be ventilative.

2-6 Release the on-off device in the case of energy supply failure.

3. Operation, Adjusting And Replacing Method

3.1 On-off device

To operate this tool, just push the lever (straight type) or trigger (Gun grip type) down. The tool continuously rotating as one push the lever trigger down and it might last running for few second.

For the sake of safety, put it on a hanger or on a soft flat pad when not in use.

3.2 Change the drill bit

Disconnect the tool before attempting to put a drill bit on this tool. Use the attached chuck key to untighten the collet, then insert an appropriate drill bit according to which kind of material that you will drill hole on as deep as it can reach. Then tighten the collet again with the chuck key.

3.3 Rotating direction

If your tool is reversible, you can change the rotating direction by switch the direction lever near the trigger to your desired direction. Forward, which is marked with an "F", means clockwise direction and reverse, which is marked "R", indicates the counterclockwise direction. Before start operating this tool, please make sure the rotating direction.

3.4 Use a center punch to locate the center on where you wish to locate the new hole then apply this tool. It will not only be more precise but also prevent from the risk caused by the slip of a rotating drill bit.

3.5 If the drill bit penetrate the workpiece, keep the tool running makes it more easy to remove this tool from workpiece.

4. Maintenance

4-1 Lubrication

Before connecting the hose, apply 4 or 5 drops of #60 spindle oil at the air inlet. Use of a thicker oil can lead to reduced performance or malfunction. If a thicker oil is used by accident, wipe it away immediately. Also, every 3 or 4 hours of operation, oiling is necessary.

4-2 Storage

Avoid storing the tool in a location subject to high humidity. If the tool is left as it is used, the residual moisture inside the tool can cause rust. Before storing and after operation, oil the tool at the air inlet with spindle oil and run it for a short time.

4-3 Disposal

If the tool is too seriously damaged to be used anymore, drop it in a resource recycling can. Never drop it into fire.

4-4 Ordering service Parts

For further operational and handling information or for replacement of parts and components, contact the sale agent from whom you purchased the tool or the service division of our company.

* In ordering parts and components, give each part number, name and quantity.

Warning

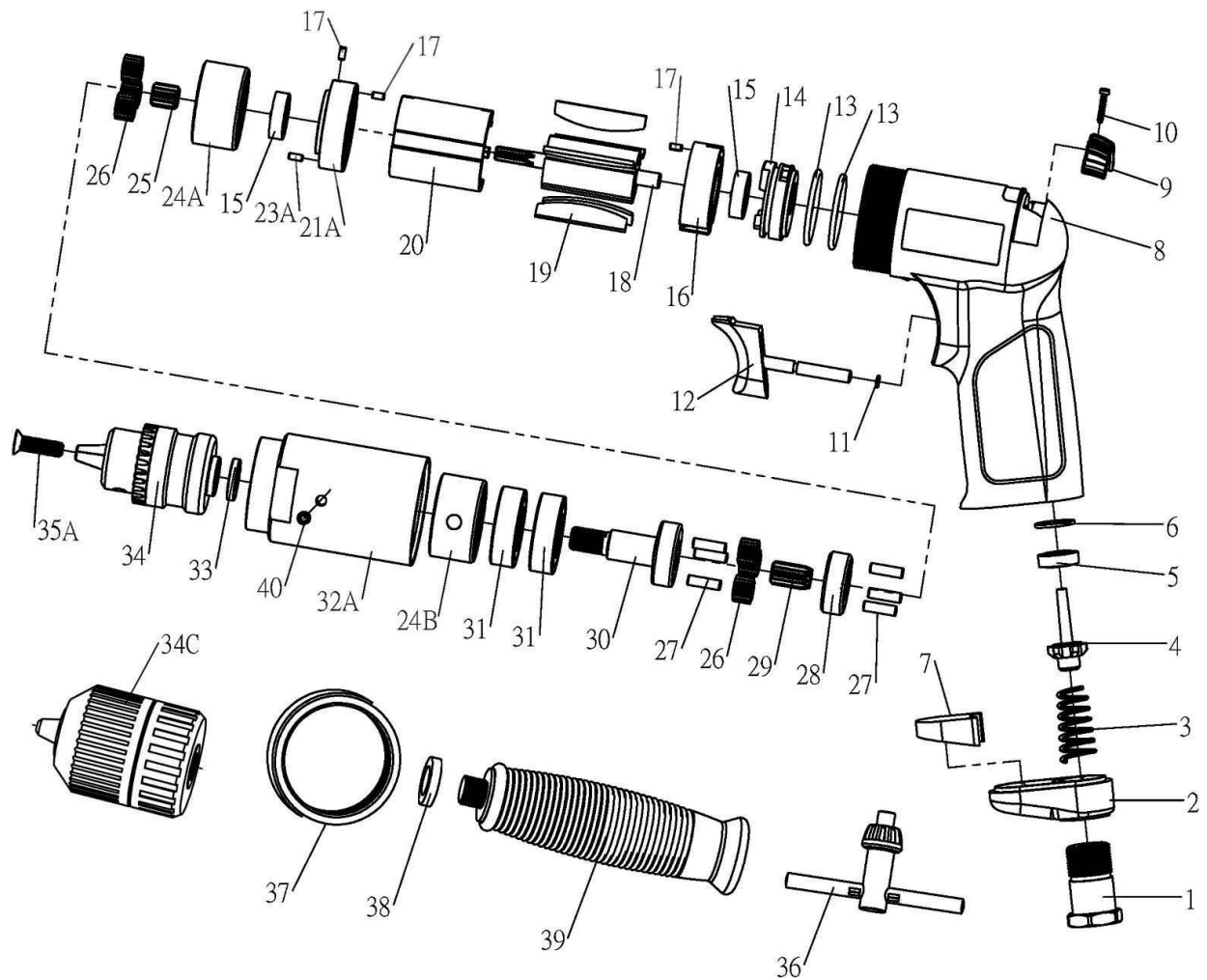
1. This tool is not insulated for coming into contact with electric power source.
2. It is forbidden to use this tool in explosive atmospheres and do not put any combustible material near the workpiece since it emit sparks when grind with metal material.
3. The drilled trash might be very sharp. Be careful while deals with this trash.
4. Prevent long hair or loose clothing from drawing in while operate this tool.
5. Never carry the tool by hose and beware of a whipping compressed air hose.
6. The workpiece shall be fixed by proper device.
7. Keep your body well balanced as you operate this tool and make sure that no people are within immediate range of tool operation.
8. Disconnect tool when not in use and attempt changing the drill bit.
9. Do not link the chuck key to this tool in any means. The key shall be placed separately from this tool



1/2" DRILL

IRONSIDE®

ART 100858



PARTS LIST

No.	Art	Parts No.	Description	Q'ty	No.	Art	Parts No.	Description	Q'ty
1	101720	C112-01	Inlet Bushing	1	21A	101740	C112-21A	Front Plate	1
2	101721	C112-02	Deflector	1	23A	101741	C112-23A	Pin (Φ2.5x5.8L)	1
3	101722	C112-03	Valve Spring	1	24A	101742	C112-24A	Internal Gear	1
4	101723	C112-04	Valve	1	24B	101743	C112-24B	Internal Gear	1
5	101724	C112-05	Valve Seat	1	25	101744	C112-25	Pinion Gear	1
6	101725	C112-06	Spacer	1	26	101745	C112-26	Idler Gear	6
7	101726	C112-07	Silencer	1	27	101746	C112-27	Pin (Φ4x13.8)	1
8	101727	C112-08	Composite Housing	1	28	101747	C112-28	Reduction Spindle	1
9	101728	C112-09	Reverse Valve Lever	1	29	101748	C112-29	Reduction Gear	1
10	101729	C112-10	Taping Screw (Φ2.3x12L)	1	30	101749	C112-30	Work Spindle	1
11	101730	C112-11	O-Ring (3x1)	1	31	101750	C112-31	Ball Bearing (6201ZZ)	2
12	101731	C112-12	Trigger	1	32A	101751	C112-32A	Gear Housing	1
13	101732	C112-13	O-Ring (27x2)	2	33	101752	C112-33	Chuck Spacer	1
14	101733	C112-14	Valve Body	1	34	101754	C112-34C	Keyless Chuck [100858]	1
15	101734	C112-15	Bearing (626)	2	35A	101755	C112-35A	Screw (M5x25L)	1
16	101735	C112-16	Rear Plate	1	36	101756	C112-36	Key (1/2")	1
17	101736	C112-17	Spring Pin (Φ2.5x5.0L)	3	37	101757	C112-37	Clamp Ring	1
18	101737	C112-18	Rotor	1	38	101758	C112-38	Rubber Gasket	1
19	101738	C112-19	Rotor Blade	5	39	101759	C112-39	Hand Handle	1
20	101739	C112-20	Cylinder	1	40	101760	C112-40	Screw	1